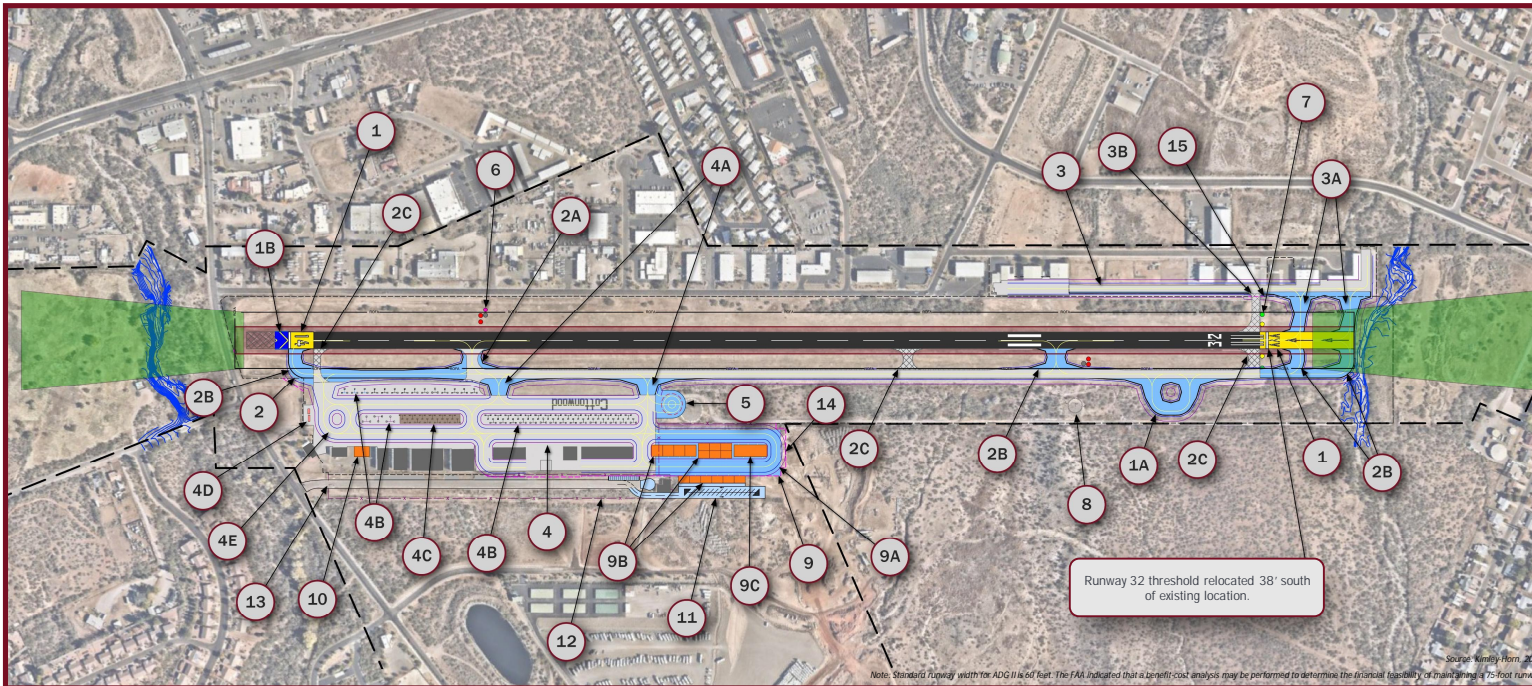
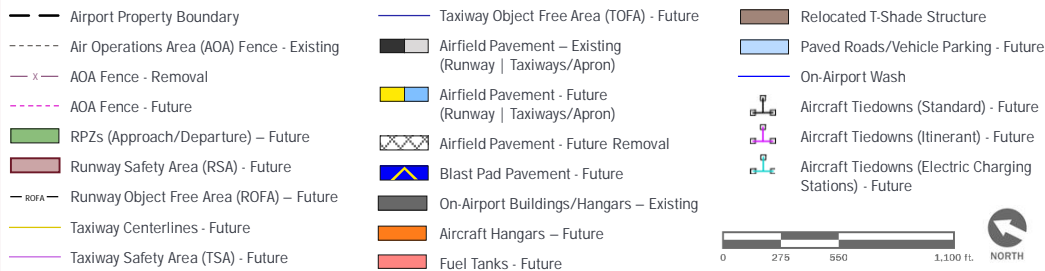


20-YEAR RECOMMENDED DEVELOPMENT PLAN



PROJECT LIST

1. Design & Construct Runway Extension & Strengthening
 - 1A. Design & Construct Run-up Area
 - 1B. Standardize Runway 14 Blast Pad
2. Design & Construct Taxiway A Extension & Narrowing
 - 2A. Standardize Existing Taxiway Connectors
 - 2B. Design & Construct 4 Taxiway Connectors
 - 2C. Remove Taxiway Pavement
3. Design & Construct East Taxiway Modifications
 - 3A. Design & Construct 2 Taxiway Connectors
 - 3B. Remove Taxiway Pavement
4. Design & Construct Apron Reconfiguration
 - 4A. Design & Construct 2 Taxiway Connectors
 - 4B. Relocate Aircraft Tiedowns
 - 4C. Relocate T-Shade Structure
 - 4D. Relocate Fuel Tank
 - 4E. Restripe Taxiway Centerlines
5. Design & Construct Relocated Helicopter Operating Area
6. Relocate Runway 14 PAPI PCU
7. Relocate Runway 32 Runway End Identifier Lights (REILs)
8. Relocate Segmented Circle with Lighted Wind Indicator
9. Design & Construct Hangar Development Area
 - 9A. Design & Construct Taxiway (Includes Grading)
 - 9B. Design & Construct 16 Box Hangars
 - 9C. Design & Construct Six-Unit T-Hangar
10. Design & Construct Box Hangar
11. Design & Construct Roadway & Vehicle Parking
12. Remove AOA Fence
13. Remove Access Gate
14. Construct AOA Fence
15. Lower AOA Fence



RUNWAY LENGTH & DECLARED DISTANCES

| | | |
|---------------------------------------|--------------|--------|
| Existing Runway 14-32 Dimensions | 4,252' x 75' | |
| Future Runway 14-32 Dimensions | 4,787' x 75' | |
| <hr/> | | |
| Future Declared Distances | Rwy 14 | Rwy 32 |
| Take Off Run Available (TORA) | 4,402' | 4,787' |
| Take Off Distance Available (TODA) | 4,787' | 4,787' |
| Accel. Stop Distance Available (ASDA) | 4,547' | 4,787' |
| Landing Distance Available (LDA) | 4,547' | 4,402' |