



COTTONWOOD MUNICIPAL AIRPORT



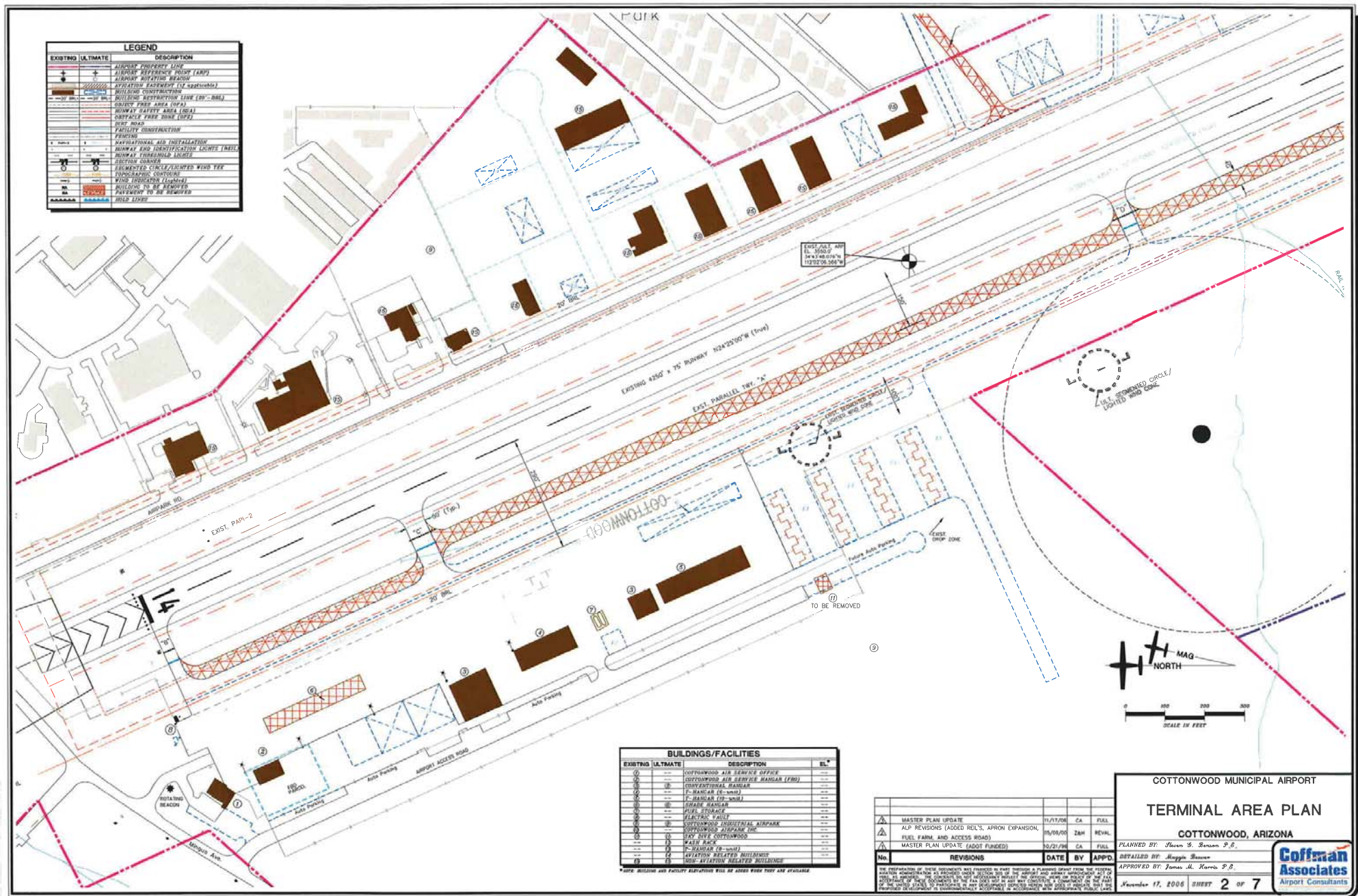
AIRPORT LAYOUT PLAN SET

INDEX OF DRAWINGS

- 1. AIRPORT LAYOUT PLAN**
- 2. TERMINAL AREA DRAWING**
- 3. AIRPORT AIRSPACE DRAWING**
- 4. INNER PORTION OF THE RUNWAY 14-32
APPROACH SURFACE DRAWING**
- 5. RUNWAY 14-32 APPROACH
SURFACE DRAWING**
- 6. ON-AIRPORT LAND USE DRAWING**
- 7. AIRPORT PROPERTY MAP**

**PREPARED FOR
CITY OF COTTONWOOD**



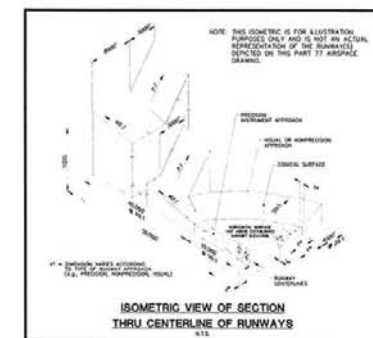


No.	REVISIONS	DATE	BY	APP
1	MASTER PLAN UPDATE	11/17/06	Ca	FU
2	ALP REVISIONS (ADDED REIL'S, APRON EXPANSION, FUEL FARM, AND ACCESS ROAD)	05/04/05	Zah	RE
3	MASTER PLAN UPDATE (ADDED FUNDED)	10/21/99	Fm	RE

THE PREPARATION OF THESE DOCUMENTS WAS FINANCED IN PART THROUGH A PLANNING GRANT FROM THE FEDERAL AVIATION ADMINISTRATION AS DESCRIBED UNDER SECTION 205 OF THE AIRPORT AND AIRWAY INVESTMENT ACT OF 1996. THE FEDERAL AVIATION ADMINISTRATION WAIVES THE USUAL REQUIREMENT FOR THE SUBMITTER TO PROVIDE A GUARANTEE OF FUNDING FOR THE ENTIRE DURATION OF THE AGREEMENT. THE SUBMITTER AGREES TO MAINTAIN THE PROJECT AND TO PROVIDE THE NECESSARY MAINTENANCE AND REPAIRS TO THE PROJECT. THE SUBMITTER AGREES TO MAINTAIN THE PROJECT AND TO PROVIDE THE NECESSARY MAINTENANCE AND REPAIRS TO THE PROJECT.



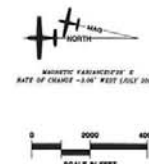
OBSTRUCTION TABLE					
Object Description	Object Elevation	Obstructed Part 77 Surface	Surface Elevation	Object Penetration	Proposed Object Disposition
1. MINOUS AVE.	3515'	PRIMARY SURFACE	3527'	3'	NO CHANGE
2. AIRPARK RD.	3520'	PRIMARY SURFACE	3527'	8'	NO CHANGE
3. FENCE	VARIES	PRIMARY SURFACE	3527'	VARIES	NO CHANGE
4. TERRAIN	UP TO 3791'	HORIZONTAL SURFACE	3700'	91'	NO CHANGE
5. TERRAIN	UP TO 3931'	HORIZONTAL SURFACE	3700'	231'	NO CHANGE
6. TERRAIN	UP TO 4391'	CONEICAL SURFACE	3743'	648'	NO CHANGE
7. TERRAIN	UP TO 4273'	CONEICAL SURFACE	3742'	531'	NO CHANGE
8. TERRAIN	UP TO 4327'	CONEICAL SURFACE	3761'	566'	NO CHANGE
9. TERRAIN	UP TO 4541'	CONEICAL SURFACE	3884'	657'	NO CHANGE
10. TERRAIN	UP TO 4800'	CONEICAL SURFACE	3900'	950'	NO CHANGE



OBSTRUCTION LEGEND	
① OBSTRUCTION	
② TOPOGRAPHIC OBSTRUCTION	

GENERAL NOTES:

- Obstructions, clearances, and locations are calculated from ultimate runway end elevations and ultimate approach surfaces, unless otherwise noted.
- Depiction of features and objects within the outer portion of the approach surfaces, is illustrated on the RUNWAY APPROACH SURFACE PROFILES, sheet 4 of this plan set.
- Depiction of features and objects within the inner portion of the approach surfaces, is illustrated on the SKEWER PORTION OF THE RUNWAY 14-32 APPROACH SURFACE DRAWING, sheet 5 of this plan set.
- Base map derived from USGS maps Cottonwood 1973, Clarkdale 1973, Cornville 1968 and Cornville 1968 and Page Springs 1969.



COTTONWOOD MUNICIPAL AIRPORT

AIRPORT AISPACE DRAWING

COTTONWOOD, ARIZONA

PLANNED BY: *Steven S. Benner P.E.*

DETAILED BY: *Maggie Benner*

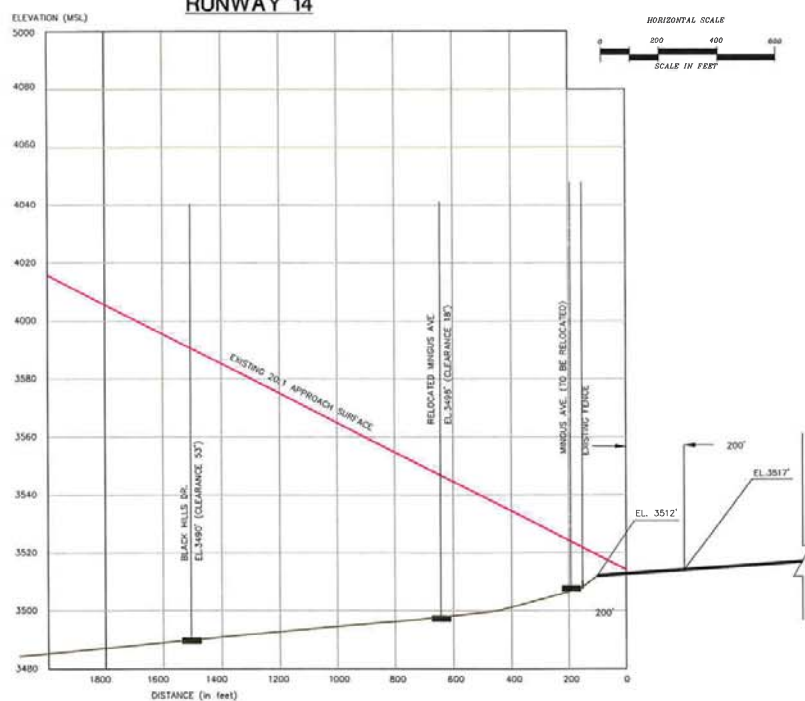
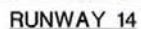
APPROVED BY: *James H. Harris P.E.*

November 17, 2008

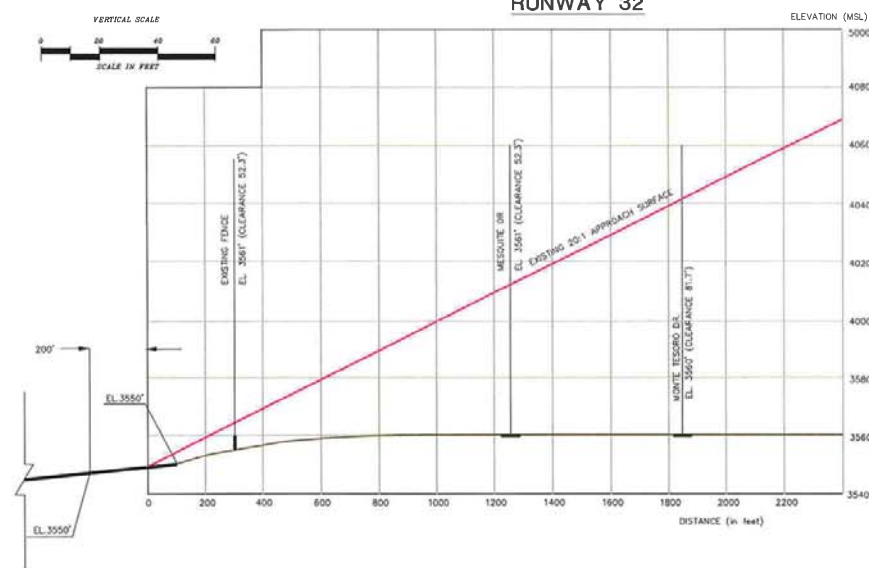
SHEET 3 OF 7

Goffman Associates
Airport Consultants

No.	REVISIONS	DATE	BY	APPD.
1	MASTER PLAN UPDATE	11/17/08	CA	FULL
2	ALP REVISIONS (ADDED REL'S, APRON EXPANSION, FUEL FARM, AND ACCESS ROAD)	05/09/08	ZAM	REVUL
3	MASTER PLAN UPDATE (ADDT FENCED)	05/21/08	CA	FULL



RUNWAY 32



	MASTER PLAN UPDATE	11/17/08	CA	FU	
	ALP REVISIONS (ADDED REIL'S, APRON EXPANSION, FUEL FARM, AND ACCESS ROAD)	05/06/00	ZBR	RE	
	MASTER PLAN UPDATE (ADOT FUNDED)	10/21/96	CA	FU	
No.	REVISIONS	DATE	BY	AP	
<p>THE INFORMATION ON THESE DOCUMENTS WAS PROVIDED BY FIRST THROUGH A PLANNING GRANT FROM THE FEDERAL AVIATION ADMINISTRATION IN PARTIAL UNDER SECTION ONE OF THE AIRPORT AND AIRWAY REVENUE ACT OF 1996. THE INFORMATION ON THESE DOCUMENTS IS NOT GUARANTEED BY THE FEDERAL AVIATION ADMINISTRATION. THE INFORMATION ON THESE DOCUMENTS IS NOT GUARANTEED BY THE FEDERAL AVIATION ADMINISTRATION. THE INFORMATION ON THESE DOCUMENTS IS NOT GUARANTEED BY THE FEDERAL AVIATION ADMINISTRATION.</p>					

COTTONWOOD MUNICIPAL AIRPORT
INNER PORTION OF THE
RUNWAY 14-32
APPROACH SURFACE DRAWING
COTTONWOOD, ARIZONA

PLANNED BY: M. J. P. P.

PLANNED BY: JAMES G. BROWN, JR.

D. DETAILED BY: Maggie Evans

APPROVED BY: James M. Morris P.S.

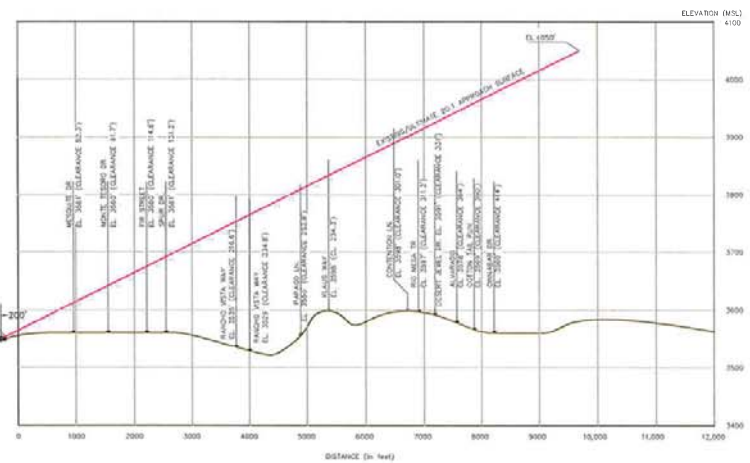
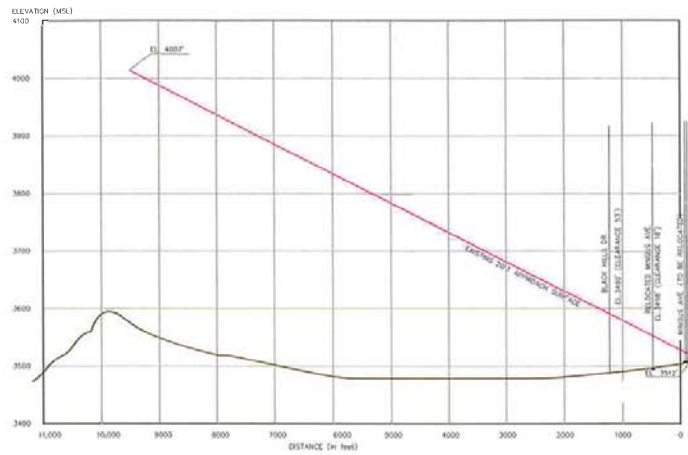
[illegible]

November 17, 2006 SHEET 4

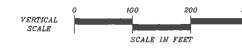
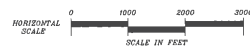
Goffman Associates
Airport Consultants
www.goffmanassociates.com

RUNWAY 14

RUNWAY 32



RUNWAY 14-32 APPROACH SURFACE



No.	REVISIONS	DATE	BY	APPROD.
1	MASTER PLAN UPDATE	11/17/08	CA	FULL
2	ALP REVISIONS (ADDED REL'S, APRON EXPANSION, FUEL FARM, AND ACCESS ROAD)	06/08/08	EMH	REVAL
3	MASTER PLAN UPDATE (ADOT FUNDED)	06/01/08	CA	FULL

COTTONWOOD MUNICIPAL AIRPORT

RUNWAY 14-32 APPROACH SURFACE PLAN

COTTONWOOD, ARIZONA

PLANNED BY: Steven S. Benson P.E.

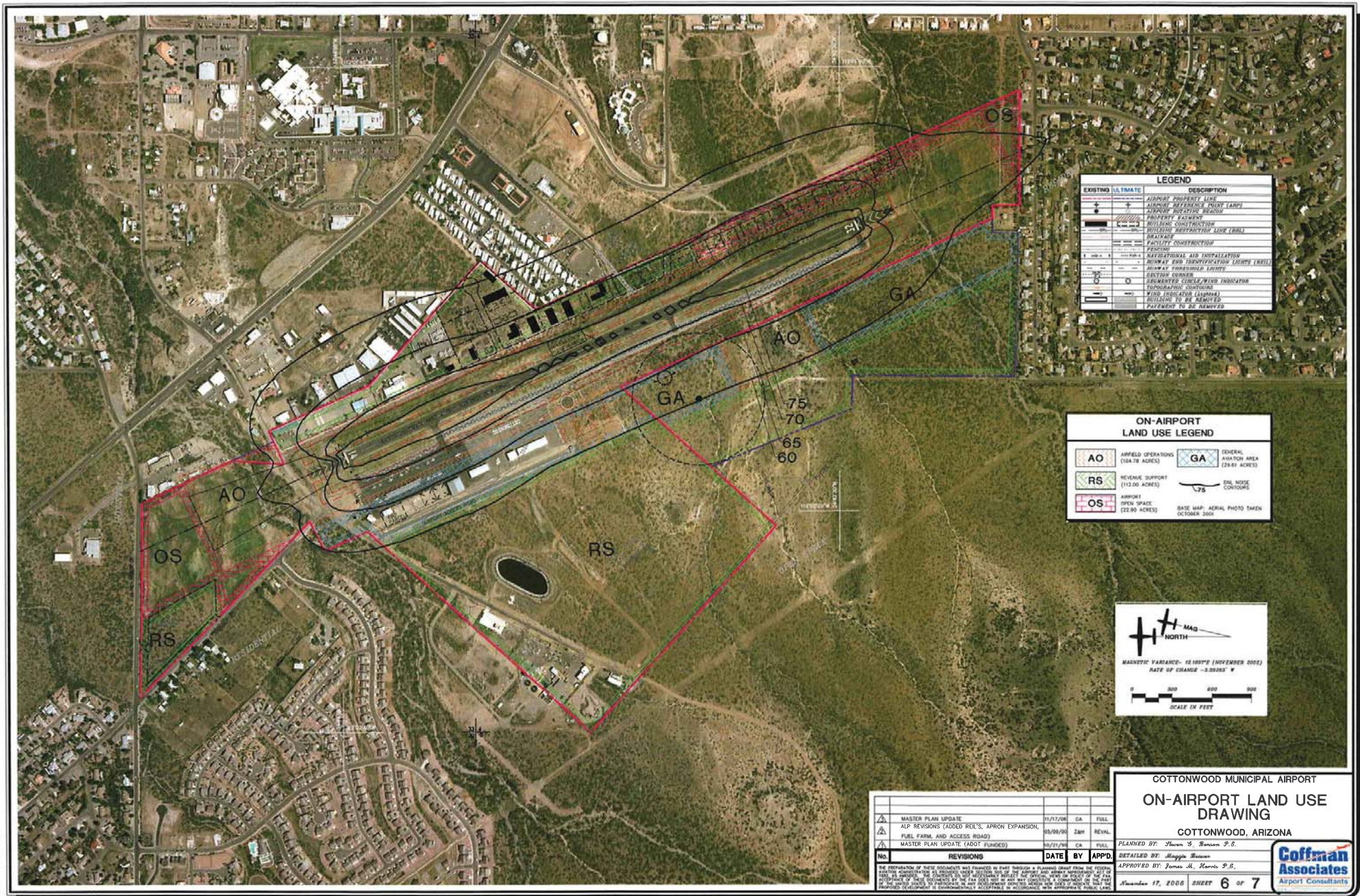
APPROVED BY: James M. Harris P.E.

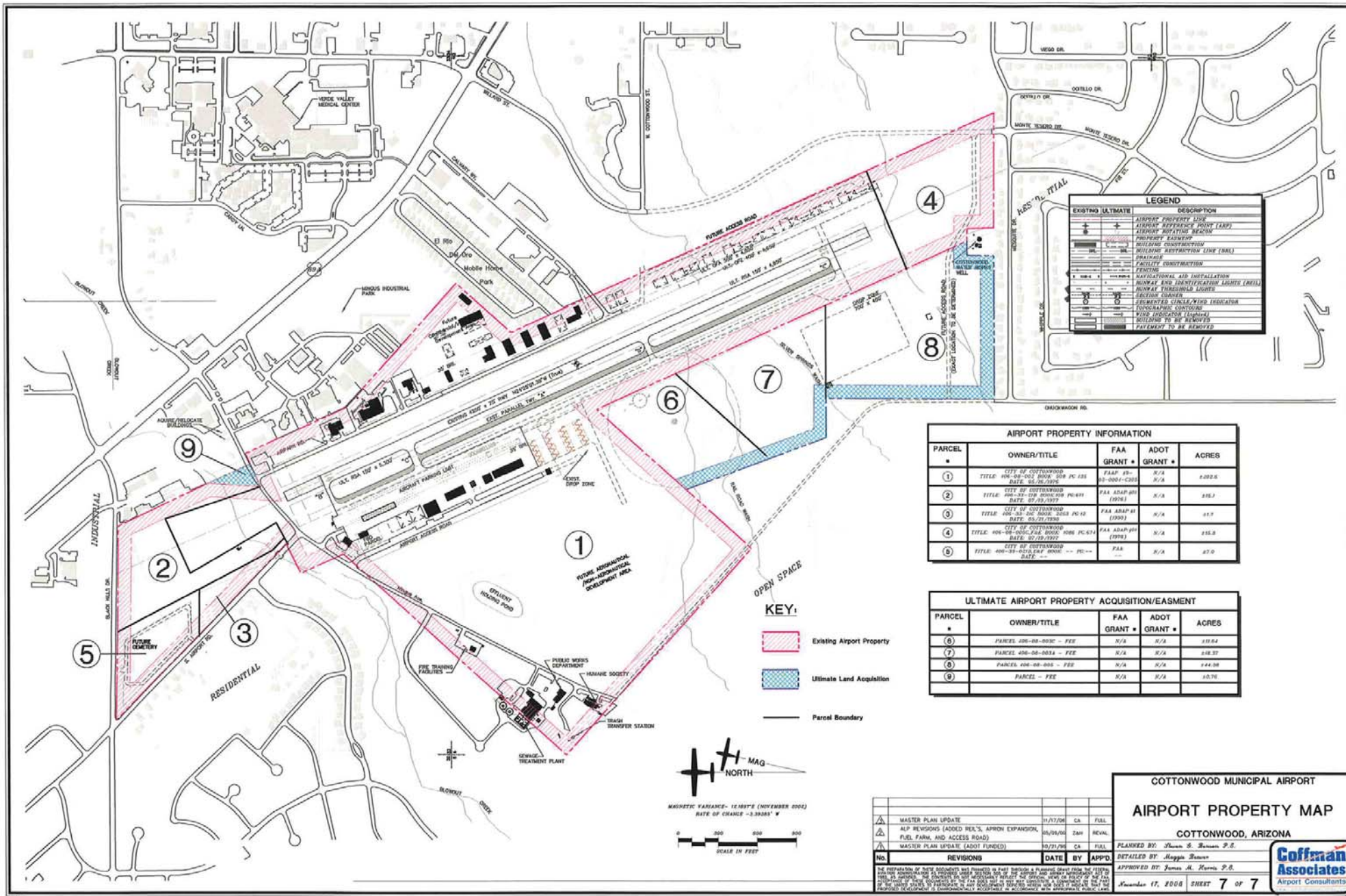
November 17, 2008

SHEET 5 OF 7

Coffman Associates

Airport Consultants







APPENDIX D

FAA-Approved Airport Layout Plan



U.S. Department
of Transportation
**Federal Aviation
Administration**

Western-Pacific Region
Los Angeles Airports District Office

P.O. Box 92007
Los Angeles, CA 90009

December 19, 2006

Mr. Tim Costello
Public Works Director
City of Cottonwood
1490 W. Mingus Avenue
Cottonwood, Arizona 86326

RECEIVED

DEC 19 2006

CITY OF COTTONWOOD
PUBLIC WORKS

Cottonwood Municipal Airport
Airport Master Plan Update Study
Airport Layout Plan - Final Approval

Dear Mr. Costello:

The enclosed Airport Layout Plan for Cottonwood Municipal Airport has been reviewed for revisions requested in our letters of October 25, 2005 and August 21, 2006. The terms specified with the referenced letters have either been met and/or addressed based on conversations between the city (Mr. Tim Costello), Coffman Associates with Mr. Jim Harris and Mr. Steve Benson, Z & H Engineering with Mr. John Berghian and FAA staff (Ms. Margie Drilling and Mr. Eric Vermeeren), therefore, the subject document is hereby conditionally approved. This approval, as indicated by my signature, is given subject to the condition that the proposed airport development listed below, but not limited to, will require an environmental determination and approval by the Federal Aviation Administration (FAA) prior to construction.

➤ Land Acquisition

The Airport Layout Plan drawing is considered by the FAA as a planning document, **not** an instrument of approval for construction. Therefore, any consideration the city may have of constructing the "future access road" as depicted through the current Runway Protection Zone (RPZ) should be coordinated with FAA prior to initiating any engineering design work for roadway alignment approval. Runway Protection Zones function to enhance the protection of people and property on the ground by keeping the areas free and clear of incompatible objects and activities. In order for the roadway to run through the RPZ, the city would be required to get a release from FAA, prior to construction, to use the property for a non-aviation use. Property releases take upwards to 1-year to complete assuming everything goes as required without any delays. Property is not typically released if it has a high value to the airport, which RPZ land is considered to be.

This approval does not commit this agency to participate in the cost for any development not currently programmed, nor does it negate notification and review requirements imposed by Part 77 and Part 157 of the Federal Aviation Regulations as it pertains to all proposed structures shown on this plan. Further, the Federal Aviation Administration cannot prevent erection of any structure in the vicinity of airports. Airport environs can only be adequately protected through such means as local zoning ordinances.

All future proposed structures shown on the ALP, if not built within six (6) months of the ALP's approval date, shall be filed as separate notice on FAA Form 7460-1 at their time of intended construction. This will enable a current airspace evaluation to be completed with regard to contemporary airspace requirements.

We have returned four (4) copies of the approved plan. Please insure that one (1) approved drawing along with a copy of this approval letter is forwarded to the State of Arizona Department of Transportation (ADOT), Aeronautics Division for their files. The remaining three (3) copies were retained for our files. If we can be of any further assistance please do not hesitate to call.

Sincerely,



Brian Q. Armstrong

Manager, Los Angeles Airports District Office

Enclosures

RECEIVED

DEC 29 2013

CITY OF COTTONWOOD
PUBLIC WORKS

