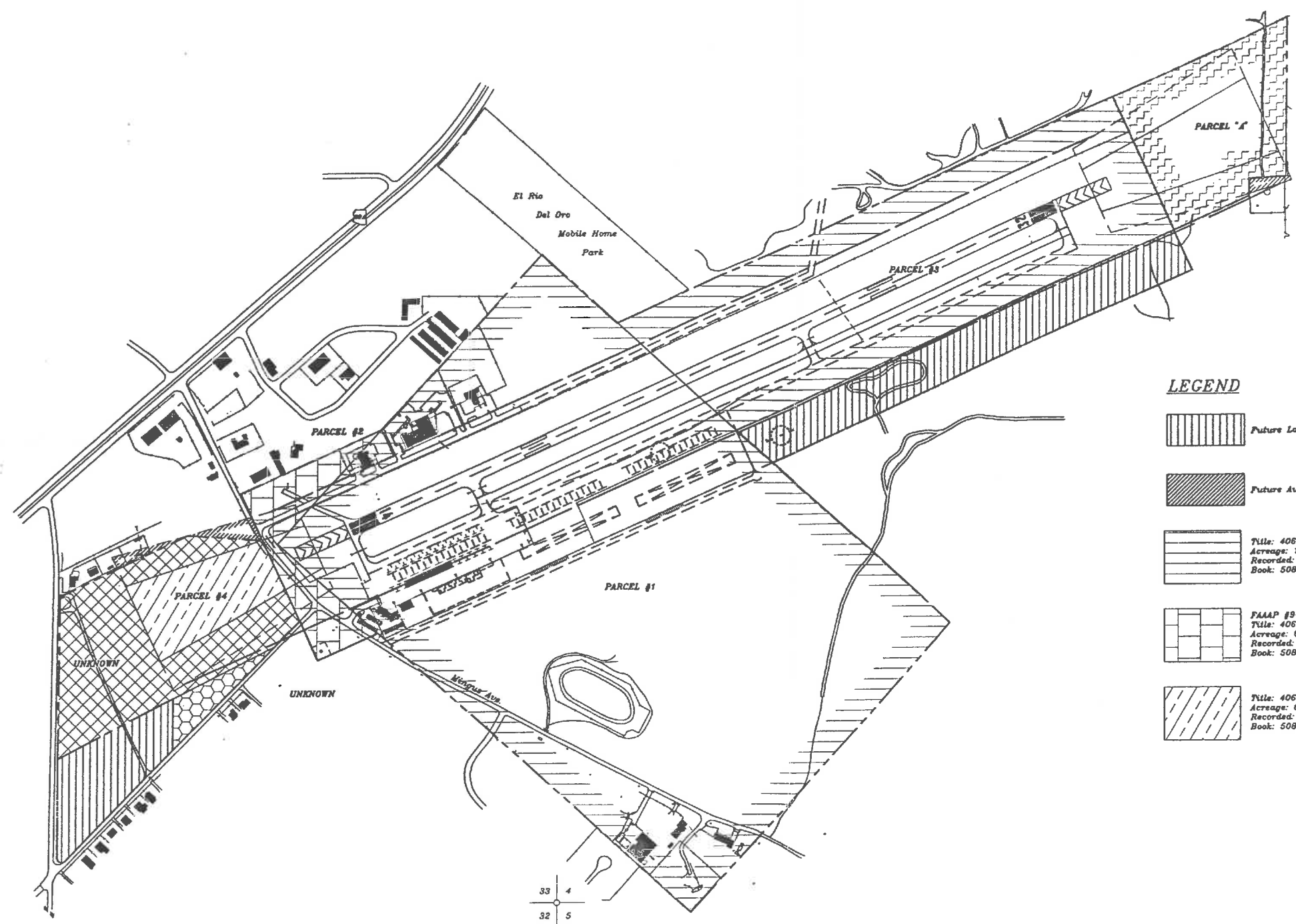





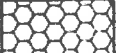
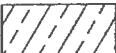



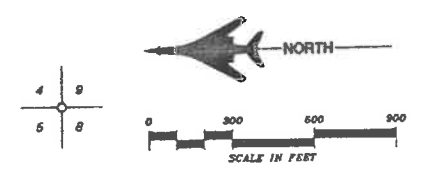
34 3
33 4

3 10
4 8



LEGEND

-  Future Land Acquisition (±21.3 Acres)
-  Future Aviation Easement (±1.2 Acres)
-  Title: 406-08-002 (Part)
Acreage: 196
Recorded: Y.C.R. Date: 6-18-78
Book: 508 Page: 435
-  FAA ADAP #01 (1976)
Title: 406-33-21B
Acreage: 18.1
Recorded: Y.C.R. Date: 7-19-77
Book: 1086 Page: 671
-  FAAAP #9-02-0004-C305 (1963)
Title: 406-08-002 (Part)
Acreage: 6.6
Recorded: Y.C.R. Date: 6-18-78
Book: 508 Page: 435
-  FAA ADAP #01 (1990)
Title: 406-33-21C
Acreage: 1.7 (Not including road)
Recorded: Y.C.R. Date: 5-21-90
Book: 2253 Page: 12
-  Title: 406-33-28
Acreage: 6.5
Recorded: Y.C.R. Date: 6-18-78
Book: 508 Page: 435
-  FAA ADAP #01 (1976)
Title: 406-08-5C
Acreage: 15.3
Recorded: Y.C.R. Date: 7-19-77
Book: 1086 Page: 674



33 4
32 5

Coffman Associates C:\MPCOP\DWG 08-13-1993 09.03

**COTTONWOOD MUNICIPAL AIRPORT
AIRPORT PROPERTY MAP
COTTONWOOD, ARIZONA**

PLANNED BY: Jack S. Sney
DETAILED BY: W.E. Holland
APPROVED BY: Pamela U. Coffman



No.	REVISIONS	DATE	BY	APP'D.

September 13, 1993 SHEET 7 OF 7